

JOLEX MACHINERIE



Loader on dump trailer

Here is the most robust and complete trailer loader on the market. In addition to being able to carry out all your work more efficiently, our options allow you to obtain a dump trailer loader that will perfectly meet your expectations!

Trailer characteristics

- Galvanized axles
- Tube frame 2 x 6 x 1/4
- Slide suspension
- Floor beam at 16 in. C/C
- 12,000 lb drop leg jack
- Reinforced spring support
- 23" side height
- 4 welded tie-down rings
- Double action rear doors
- Log square
- Stabilizing feet
- Adjustable attachment (ball 2 5/16", king pin)
- Radial tires on galvanized rims
- 72" galvanized ramps in drawers
- Aluminum cover protector
- Cover with roller
- LED lights
- Mesh (optional)



**N&N TRAILERS
REMORQUES**

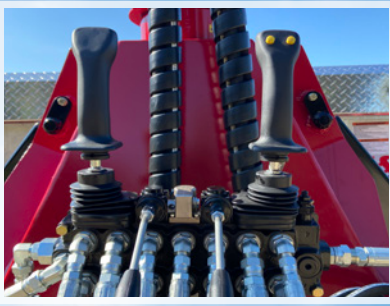


Technical Specifications of N&N Trailers

DESCRIPTION	6 x 12 / 14K	7 x 14 / 14K	7 x 14 / 16K	7 x 16 / 16K	7 x 16 / 21K
Usable width	72 in	82 in	82 in	82 in	82 in
Usable length	145 in	168 in	168 in	192 in	192 in
Axles	2 x 7,000 lbs	2 x 7,000 lbs	2 x 8,000 lbs	2 x 8,000 lbs	3 x 7,000 lbs
Brakes	Electric	Electric	Electric	Electric	Electric
Tires	ST-235/80R16	ST-235/80R16	ST-215/75R17.5	ST-215/75R17.5	ST-235/80R16
	10 ply	10 ply	16 ply	16 ply	10 ply
Telescopic cylinder	3 stage, 7T	3 stage, 12T	3 stage, 12T	3 stage, 12T	3 stage, 12T
Empty weight	3,100 lbs	4,300 lbs	4,300 lbs	4,600 lbs	4,600 lbs
Loading capacity	11,990 lbs	12,880 lbs	12,880 lbs	12,550 lbs	18,150 lbs
Total length	205 in	228 in	228 in	252 in	252 in
Total width	94 in	102 in	102 in	102 in	102 in
Bottom and side thickness	11 Ga Steel	11 Ga Steel	11 Ga Steel	11 Ga Steel	11 Ga Steel
Ramp capacity	10,000 lbs	10,000 lbs	10,000 lbs	10,000 lbs	10,000 lbs
Materials	Hot galvanized steel	Hot galvanized steel	Hot galvanized steel	Hot galvanized steel	Hot galvanized steel

Jolexmachinerie.com

Note: Jolex reserves the right to make changes without notice.



Loader characteristics

- Single mast allowing tool change in just a few minutes
- Malleable mast with 360° rotation
- Hydraulic unit 13 hp, 8 gpm
- A single machine for several uses
- Solid tool designed for big jobs
- Hardened steel axle stem
- Large bearing on the axes for greater solidity
- Tested steel structure
- 4000 psi hoses with very wear-resistant protective sheath and treated to resist UV rays
- 360° rotation
- The electric joystick type control system is height adjustable
- The clam is continuously rotating
- The grapple has a lot of clamping force, it can be used for wood, stone, hay, manure, iron, etc. Its design allows the intertwined wood to be well placed
- Very malleable mast, it lifts almost parallel to the support post for greater accessibility in tight places. It folds on itself very close to its base to facilitate front loading.



Technical Specifications for Jolex Loaders

DESCRIPTION	DL 1400	Multi 1400	DL 1650	Multi 1650
Boom height	72 in	72 in	82 in	82 in
Boom rotation	360°	360°	360°	360°
Telescopic boom	30 in	---	48 in	---
Total weight (lbs)	1,950 lbs	1,950 lbs	2,965 lbs	2,965 lbs
Maximum reach with clamp	14 feet	14 feet	16' 6"	16' 6"
Maximum reach with shovel	---	15 feet	---	17' 6"
Minimum boom span	31 in	31 in	31 in	31 in
Breakout force (lbs)	5,500 lbs	5,500 lbs	5,500 lbs	5,500 lbs
Digging depth (pds)	---	8 feet	---	9.5 feet
Lift capacity at max.	1,425 lbs	1,425 lbs	1,885 lbs	1,885 lbs
Lift capacity (lbs)	(8.5') 4,000	(8.5') 4,000	(9') 5,000	(9') 5,000
Grapple opening	49 in	49 in	52 in	52 in
Grapple closing	3.5 in	3.5 in	4 in	4 in
Grapple rotation	continuous	continuous	continuous	continuous
Excavation bucket	---	18 in	---	18 in
Gravel bucket	---	30 in	---	30 in
Working pressure	2,300 psi	2,300 psi	2,300 psi	2,300 psi
Recommended oil flow	6 to 12 gpm	6 to 12 gpm	8 to 15 gpm	8 to 15 gpm
Recommended Tractor Force (hp)	55 to 120	90 to 125	90 +	125 +

Note: Jolex reserves the right to make changes without notice.

**Several models and options available,
do not hesitate to contact us,
we will be happy to advise you !**

Head Office: 171, boul. Labbe Nord, porte 1, Victoriaville (Quebec) G6P 1A7 Canada
Phone: 819 758-4405 • Toll-Free: 1 888 369-8777 • E-mail: info@jolexmachinerie.com

Jolexmachinerie.com