



Loader on platform trailer (Gooseneck)

N&N's Buffalo Junior Platform trailers aren't afraid to take it on! They are robust, efficient and are manufactured with the floor length that suits you. Our platform trailers are designed to transport large loads, including agricultural machinery.

Trailer characteristics

- Heat shrink connector
- Fifth Wheel or 2-5/16" ball coupler
- 2" slipper spring suspension (16K)
3" slipper spring suspension (20K)
- 2 x 12,000 lbs drop leg jack
- 8" H-Beam frame
- Stabilizing feet
- 3" C-channels cross member on 16" C/C
- New flip down spare mount
- Side bar with tie-down pocket
- Winch track on driver side
- Footsteps on front
- 36" Deck height
- LED Light
- 2" x 8' Hemlock floor
- Wood post, qty 8



N&N TRAILERS REMORQUES

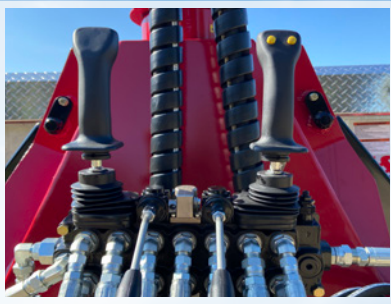


Technical Specifications of N&N Platform Trailers (Gooseneck)

DESCRIPTION	Buffalo JR 8 x 18 / 16K	Buffalo JR 8 x 20 / 16K	Buffalo JR 8 x 20 / 20K
Usable Width	97-1/2"	97-1/2"	97-1/2"
Usable Length	18' Deck	20' Deck	20' Deck
Axles	2 x 8,000 lbs	2 x 8,000 lbs	2 x 10,000 lbs (single wheels)
Brakes	Electric	Electric	Electric
Tires	215/75R17.5, 16 ply	215/75R17.5, 16 ply	235/75R17.5, 18 ply
Weight when empty	5,800 lbs	6,000 lbs	6,000 lbs
Load Capacity	12,750 lbs	12,500 lbs	17,500 lbs
Overall Length	372"	396"	396"
Overall Width	102"	102"	102"
Decking	2" x 8' Hemlock boards	2" x 8' Hemlock boards	2" x 8' Hemlock boards
Finish	Hot dipped galvanized	Hot dipped galvanized	Hot dipped galvanized

Jolexmachinerie.com

Note: Jolex reserves the right to make changes without notice.



Loader characteristics

- Single mast allowing tool change in just a few minutes
- Malleable mast with 360° rotation
- Hydraulic unit 13 hp, 8 gpm
- A single machine for several uses
- Solid tool designed for big jobs
- Hardened steel axle stem
- Large bearing on the axes for greater solidity
- Tested steel structure
- 4000 psi hoses with very wear-resistant protective sheath and treated to resist UV rays
- 360° rotation
- The electric joystick type control system is height adjustable
- The clam is continuously rotating
- The grapple has a lot of clamping force, it can be used for wood, stone, hay, manure, iron, etc. Its design allows the intertwined wood to be well placed
- Very malleable mast, it lifts almost parallel to the support post for greater accessibility in tight places. It folds on itself very close to its base to facilitate front loading.



Technical Specifications for Jolex Loaders

DESCRIPTION	DL 1400	Multi 1400	DL 1650	Multi 1650
Boom height	72 in	72 in	82 in	82 in
Boom rotation	360°	360°	360°	360°
Telescopic boom	30 in	---	48 in	---
Total weight (lbs)	1,950 lbs	1,950 lbs	2,965 lbs	2,965 lbs
Maximum reach with clamp	14 feet	14 feet	16' 6"	16' 6"
Maximum reach with shovel	---	15 feet	---	17' 6"
Minimum boom span	31 in	31 in	31 in	31 in
Breakout force (lbs)	5,500 lbs	5,500 lbs	5,500 lbs	5,500 lbs
Digging depth (pds)	---	8 feet	---	9.5 feet
Lift capacity at max.	1,425 lbs	1,425 lbs	1,885 lbs	1,885 lbs
Lift capacity (lbs)	(8.5') 4,000	(8.5') 4,000	(9') 5,000	(9') 5,000
Grapple opening	49 in	49 in	52 in	52 in
Grapple closing	3.5 in	3.5 in	4 in	4 in
Grapple rotation	continuous	continuous	continuous	continuous
Excavation bucket	---	18 in	---	18 in
Gravel bucket	---	30 in	---	30 in
Working pressure	2,300 psi	2,300 psi	2,300 psi	2,300 psi
Recommended oil flow	6 to 12 gpm	6 to 12 gpm	8 to 15 gpm	8 to 15 gpm
Recommended Tractor Force (hp)	55 to 120	90 to 125	90 +	125 +

Note: Jolex reserves the right to make changes without notice.

**Several models and options available,
do not hesitate to contact us,
we will be happy to advise you !**

Head Office: 171, boul. Labbe Nord, porte 1, Victoriaville (Quebec) G6P 1A7 Canada
Phone: 819 758-4405 • Toll-Free: 1 888 369-8777 • E-mail: info@jolexmachinerie.com

Jolexmachinerie.com